



**Noble Marine RS 400 National Championships 2024**  
**18<sup>th</sup> August to 23<sup>rd</sup> August 2024**  
**Hosted by Royal Torbay Yacht Club**

**SAILING INSTRUCTIONS**

**ORGANISING AUTHORITY (OA)**

This event will be organised by Royal Torbay Yacht Club (RTYC) in conjunction with the RS Class Association.

The notation '[NP]' in a rule of the notice of race (NoR) means that a boat may not protest another boat for breaking that rule. This changes RRS 60.1(a).

**1. RULES**

- 1.1 The event is governed by the rules as defined in *The Racing Rules of Sailing*.
- 1.2 Racing rules Race Signals AP, 31, 33, 35, 44.1, 60.1(a), 60.1(b), 61.3, 62.1(a), 62.2, A2 A5.1 and A5.2 will be changed. The changes appear, in full, in this notice of race or in the sailing instructions. The sailing instructions may also change other racing rules.
- 1.3 (DP) Torbay Harbour Byelaws.

**2. CHANGES TO SAILING INSTRUCTIONS**

- 2.1. Any changes to the Sailing Instructions will be posted before 09:00 hours on the day it will take effect, except that any change to the schedule of races will be posted by 20:00 hours on the day before it will take effect.

**3. COMMUNICATION**

- 3.1. The official noticeboard is located online at [RS400 Nationals | Royal Torbay Yacht Club \(rtyc.org\)](https://www.rs400nationals.com).
- 3.2. [DP] While racing, except in an emergency, a boat shall not make voice or data transmissions and shall not receive voice or data communication that is not available to all boats.
- 3.3. A WhatsApp group may also be used to contact registered mobile numbers for each boat providing notifications and Race Committee (RC) communications whilst ashore ([WhatsApp Group Link](#) or use QR Code below). Failure to receive WhatsApp messages shall not be grounds for redress. This changes RRS 62.1(a).



#### 4. CODE OF CONDUCT

4.1. (DP) Competitors and support persons shall comply with reasonable requests from race officials.

#### 5. SIGNALS MADE ASHORE

5.1. Signals made ashore will be displayed on the flagpole at the inshore end of Haldon Pier, adjacent to the slipway.

5.2. When AP is displayed ashore, 1 minute is replaced with not less than 45 minutes in Race Signals AP.

5.3. (DP) Boats shall not launch until Flag D is displayed with one sound signal. The warning signal will not be made before the scheduled time or less than 45 minutes after flag D is displayed.

#### 6. SCHEDULE OF RACES

6.1. Registration will take place at the RTYC from 15.00-18.00 on Sunday 18<sup>th</sup> August 2024 and 09.00-10.30 Monday 19<sup>th</sup> August 2024.

6.2. Briefing – A Briefing will be held at 20.00 on Sunday 18<sup>th</sup> August 2024 at the RTYC.

6.3. It is intended to run 10 races over 5 days with up to 4 races in any one day, depending upon prevailing and forecast weather conditions and sea state.

6.4. Dates and scheduled number of races:

Date	1 <sup>st</sup> Warning Signal	Scheduled Races
Monday 19th	12.55	2
Tuesday 20th	12.55	2
Wednesday 21 <sup>st</sup>	12.55	2
Thursday 22 <sup>nd</sup>	12.55	2
Friday 23 <sup>rd</sup>	12.55	2

6.5. On the last scheduled day of racing no warning signal will be made after 15:00 hours.

#### 7. CLASS FLAGS

7.1 The class flag is a purple flag with the RS400 insignia. Should the RS400 class flag not be available then Numeral 4 will be used.

#### 8. RACING AREA

8.1 Racing will take place in Torbay, see Addendum A.

#### 9. THE COURSES

9.1. The course diagrams and configuration are shown in Addendum B.

9.2. No later than the warning signal, the main Race Committee vessel will display the course to be sailed and the approximate bearing of the first leg.

9.3. If a course is shortened such that the finish is at the leeward end of the course, then the finish line will be that defined in paragraph 14 below. This changes RRS 32.2

## **10. MARKS**

- 10.1. Marks 1, 1a, 2p and 2s will be orange inflatables.
- 10.2. Hitting a mark other than the start or finish marks will not be penalised. This changes RRS 31.
- 10.3. The change mark will be a yellow inflatable.
- 10.4. The start mark will be a White Danbuoy displaying an orange flag or a Race Committee vessel with a mast displaying an orange flag.
- 10.5. The finish mark will be White Danbuoy displaying a Blue flag.

## **11. OBSTRUCTIONS**

- 11.1. (DP) The following is an obstruction – A yellow buoy with associated trailing buoys serving as a wave monitor located at approximately 050°433N 003°517W.

## **12. THE START**

- 12.1. The race committee may use a fixed line start or a gate start. This will be indicated by the committee vessel displaying either flag G or an orange flag. This changes RRS 26.
- 12.2. Any decision to use or not use one form of starting line or the other for a particular race shall not be grounds for requesting redress. This changes RRS 60.1(b) and RRS 62.1(a).
- 12.3. To alert boats that a race will soon begin, the appropriate starting line flags will be displayed with one sound at least 5 minutes before a class warning signal is displayed.
- 12.4. Fixed Line Starts
  - 12.4.1. The starting line will be between the mast on the Race Committee vessel displaying an orange flag at the Starboard end and the start mark or Pin vessel displaying an orange flag at the Port end.
  - 12.4.2. A boat that does not start within 4 minutes after her starting signal will be scored 'Did not Start' without a hearing. This changes RRS 60.1, A5.1 and A5.2.
- 12.5. Gate Starts
  - 12.5.1. See Addendum C. This changes RRS 26.

## **13. CHANGE OF THE NEXT LEG OF THE COURSE**

- 13.1. To change the next leg of the course the Race Committee may move or lay new marks 1 and/or marks 2 or finishing line. If new marks are laid, the original mark(s) will be removed as soon as practicable. When in a subsequent change and a new mark is replaced, it will be replaced by an original mark. This changes RRS 33.
- 13.2. Minor course changes may not be signalled. This changes RRS 33.
- 13.3. If one or other of the gate marks or spreader mark is missing, the remaining mark shall be left to port. This changes RRS 34.

## **14. THE FINISH**

- 14.1. The Finish Line will be between a staff displaying a blue flag on the Race Committee vessel and the finish mark.
- 14.2. Alternative Finishing Line / W Flag. The Race Committee may give a finishing place to any boat that is still racing by displaying W Flag to her from an official vessel (which may be in motion) with two sounds. A boat's finishing place in these circumstances will be the place she would have received had she sailed the course and finished within any time limit, without gaining or losing any place

## **15. PENALTY SYSTEM**

15.1. See NoR 14

## **16. TARGET TIMES**

- 16.1. The target race time for the first boat is 50 minutes.
- 16.2. The target time for Mark 1 will be 30 minutes from the starting signal. If no boat has rounded Mark 1 within the time limit the race shall be abandoned.
- 16.3. Failure to meet a target time will not be grounds for redress. This changes RRS 62.1(a)
- 16.4. Boats failing to finish within 20 minutes after the first boat sails the course and finishes may be scored according to their position on the course, SI 14.2. This changes RRS 35, A4 and A5.

## **17. HEARING REQUESTS**

- 17.1. See NoR 14.
- 17.2. The Protest Time Limit is 90 minutes after the last boat in that class has finished the last race of the day or, the race committee signals no more racing today, whichever is the later. The time will be posted on the official notice board.
- 17.3. Hearing request forms are available from the race office or the event website.
- 17.4. Notices will be posted no later than 30 minutes after the protest time limit to inform competitors of hearings in which they are parties or named as witnesses. Hearings will take place in a Protest Room located at the Royal Torbay Yacht Club, beginning at the time posted.

## **18. SCORING**

18.1. See NoR 15.

## **19. SAFETY REGULATIONS (DP)**

- 19.1. The tally control point to check-out and check-in will be located at the top of the slipway from Haldon Pier.
- 19.2. All helms shall individually check-out before racing by personally advising Tally control point of their sail number.
- 19.3. All helms shall individually check-in immediately on returning to shore after racing, but no later than the protest time limit, by personally advising Tally control of their sail number.
- 19.4. A boat that retires from a race shall notify the race committee as soon as possible.
- 19.5. When returning to the harbour after racing, boats may be held outside the harbour entrance to avoid unnecessary congestion on the slipway. All boats are required to follow the instructions of the safety ribs supervising this process.
- 19.6. The race committee may protest a boat for a breach of these safety regulations.

## **20. REPLACEMENT OF CREW OR EQUIPMENT (DP)**

- 20.1. Substitution of competitors is not allowed without the prior written approval of the race committee. Any such approval was granted then it would be treated as a new entrant.
- 20.2. Change of Sail Numbers is not allowed without the prior written approval of the race committee.

## **21. EQUIPMENT AND MEASUREMENT CHECKS (DP)**

21.1. See NoR 10

## **22. SUPPLIED BOATS**

Does not apply.

**23. OFFICIAL VESSELS**

- 23.1. The Race Committee vessel will be identified by a large yellow flag (Race Committee).
- 23.2. The Photography boat will be identified by a white flag with the letter "P" on the flag.
- 23.3. Mark laying boats will be identified by a yellow flag with the letter "M" on the flag

**24. SUPPORT TEAMS (DP)**

- 24.1. See NoR 16.1

**25. TRASH DISPOSAL (DP)**

- 25.1. Trash may be placed aboard official vessels or brought back to shore and disposed of it.

**26. BERTHING (DP)**

- 26.1. See NoR 18

**27. HAUL-OUT RESTRICTIONS**

Does not apply

**28. DIVING EQUIPMENT AND PLASTIC POOL**

Does not apply

**29. PRIZES**

- 29.1. See NoR 24.

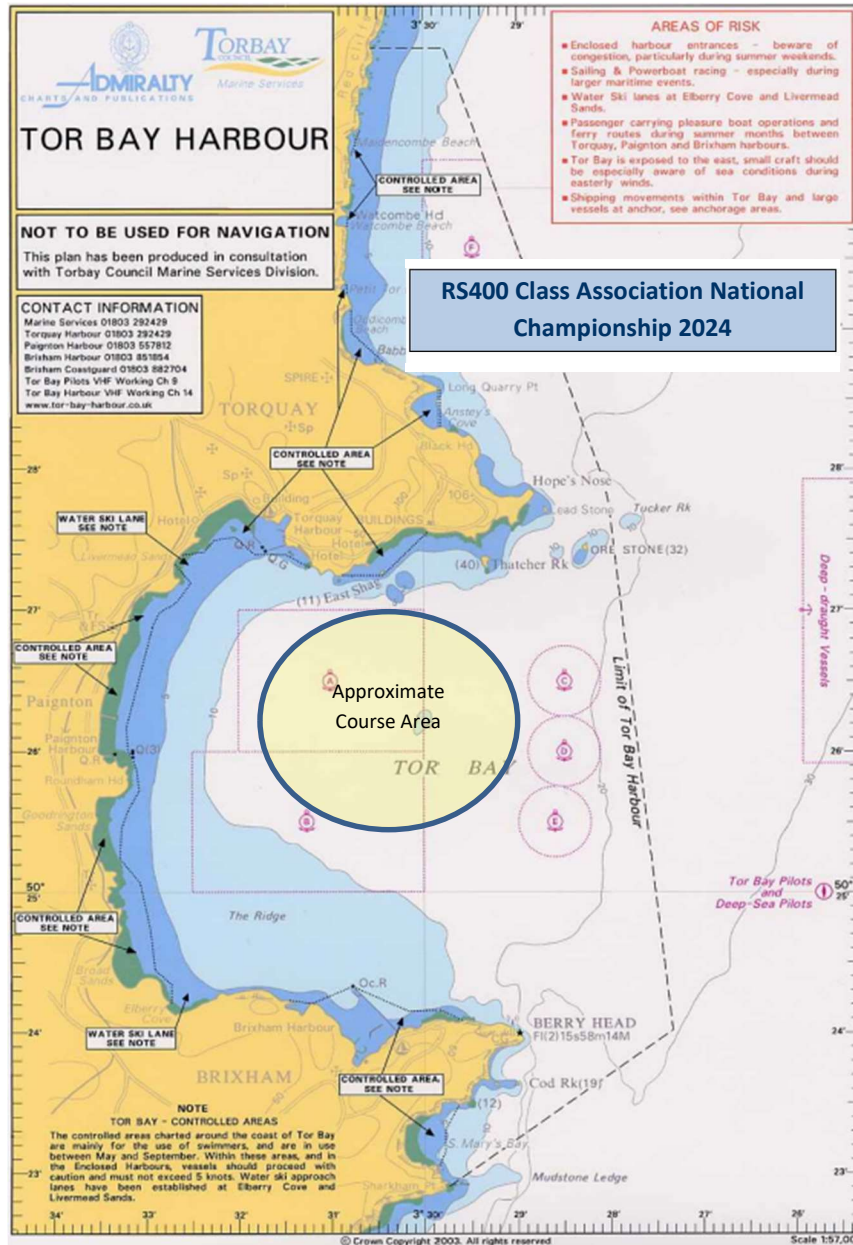
**30. RISK STATEMENT**

- 30.1. See NoR 22

**31. INSURANCE**

- 31.1. See NoR 23.

# Addendum A – Course Area



## Addendum B Courses

<b>LRA</b>	<b>COURSE: WINDWARD / LEEWARD with spreader mark and reaching finish</b>
<b>Signal</b>	<b>Mark Rounding Order</b>
<b>LRA2</b>	<b>Start - 1 - 1a - 2s/2p - 1 - 1a - 2p - Finish</b>
<b>LRA3</b>	<b>Start - 1 - 1a - 2s/2p - 1 - 1a - 2s/2p - 1 - 1a - 2p - Finish</b>
<b>LRA4</b>	<b>Start - 1 - 1a - 2s/2p - 1 - 1a - 2s/2p - 1 - 1a - 2s/2p - 1 - 1a - 2p - Finish</b>

The diagram illustrates the LRA course layout. It features a 'Start' line at the bottom, marked with two buoys. A dashed line leads to the 'Finish' line, also marked with two buoys. The course consists of several marks represented by red circles: '1a' and '1' at the top, and '2s' and '2p' in the middle. Arrows indicate the sequence of the course: starting from the 'Start' line, the course goes up to mark '1', then to '1a', then to '2s/2p', then back to '1', then to '1a', then to '2p', and finally to the 'Finish' line. The '2s' and '2p' marks are connected by a line, and the '1a' and '1' marks are also connected by a line.

## Addendum C Gate Starts

1. The race committee vessel will be in the starting area, which will be to leeward of the course.
2. The race committee vessel and gate launch will display flag G. The guard launch will display flag U. Starting signals will be made from the race committee vessel.
3. The race committee will nominate the pathfinder and a reserve pathfinder (the boat that would become pathfinder if the pathfinder is unable to race) for the first race of the event. Thereafter, the pathfinder will be the boat placed tenth in the preceding race, unless she has been the pathfinder previously in the event or is unable to race in which case the pathfinder will be the boat placed eleventh in the preceding race, and so on. The sail numbers of the pathfinder and reserve pathfinder for the first race of each day will be posted on the official notice board.
4. The sail number of the pathfinder will be displayed on the race committee vessel at least five minutes before the warning signal for each race.
5. The port limit mark will be laid at the leeward end of the gate. The starting line for boats other than the pathfinder will be between the port limit mark and the centre of the stern of the gate launch.
6. The pathfinder starts at the starting signal. Boats other than the pathfinder shall start by crossing the starting line on starboard tack after the starting signal and before the gate closes.
7. The pathfinder shall report to the gate launch as soon as possible after her number is displayed on the race committee vessel and before the preparatory signal and follow the race officer's instructions. A pathfinder that fails to report will be scored Did Not Start without a hearing. This changes RRS A4 and RRS A5.
8. Approximately 15 seconds before the starting signal the pathfinder shall commence a close-hauled course on port tack from the port limit mark. She will be followed by the gate launch with the guard launch steam parallel.
9. The pathfinder shall maintain her close-hauled course for at least 2 minutes plus any further time that the race officer believes appropriate until released by hail from the gate launch, after which she may continue or tack. After releasing the pathfinder, the gate launch will maintain its course and speed for a further period at the discretion of the race officer. A sound signal will be made when the gate is fully open at which point the gate launch will stop and drift for a further minute. At the end of this period flag G will be removed to indicate the closing of the gate.
10. A boat that has not started when the gate is closed will be scored Did Not Start without a hearing. This changes RRS A4 and RRS A5.
11. A boat that has not already started correctly, and that is on the course side of the gate launch while the gate is open, shall not cross the starting line from the course side.
12. After the preparatory signal, a boat which threatens the unobstructed sailing of the pathfinder, or which tries to pass between the pathfinder and the gate and/or guard launch, or which causes another boat to interfere in these ways, will be disqualified without a hearing, even if the race is restarted, re-sailed, or rescheduled. This changes RRS 36, RRS 63.1 and RRS A5.
13. A boat that cannot otherwise avoid touching a starting mark may hail a right-of-way boat for room and shall retire.